

LIJOFILIZOVANI REAGENSI

Reagens	pakovanje	stabilnost radnog reagensa na 2-8°C	linearnost
KISELA FOSFATAZA	10x10mL	14 dana	0-40U/L
ALP	10x15mL, 20x15mL, 8x50mL, 4x250mL	60 dana	0-800U/L
ALT	10x15mL, 20x15mL, 8x50mL, 4x250mL	30 dana	0-500U/L
AST	10x15mL, 20x15mL, 8x50mL, 4x250mL	30 dana	0-500U/L
γ-GT	10x10mL, 8x50mL, 4x250mL	21 dan	0-1000U/L
LDH	10x15mL, 20x15mL, 8x50mL	21 dan	0-800U/L
CK	20x6,5mL, 20x15mL, 8x50mL	30 dana	0-1500U/L
CK-MB	10x6,5mL, 10x15mL	6 dana	0-2000U/L
GLUKOZA	5x100mL, 5x200mL, 5x1000mL	30 dana	0-28mmol/L
HOLESTEROL	5x15mL, 8x50mL, 4x250mL	60 dana	0-13mmol/L
TRIGLICERIDI	10x15mL, 20x15mL, 8x50mL, 4x250mL	30 dana	0-11,3mmol/L
UREA UV	10x15mL, 20x15mL, 8x50mL, 4x250mL	30 dana	0-28,5mmol/L
MOKRAĆNA KISELINA	10x15mL, 20x15mL, 8x50mL, 4x250mL	30 dana	0-1480μmol/L

KONTROLE

KONTROLNI SERUM N*	10x5mL
KONTROLNI SERUM P*	10x5mL
KONTROLNI URIN	6x10mL
LIPIDNI KONTROLNI SET* (nivo I i II)	6x3mL
CK-MB KONTROLNI SET (nivo I i II)	4x3mL

* na bazi humanog seruma

TURBIDIMETRIJSKI TESTOVI

CRPhs (III generacije)

pakovanje: (20+20)mL ili (50+50)mL

temperatura čuvanja: 2-8°C

linearnost: 0.1-320 mg/L

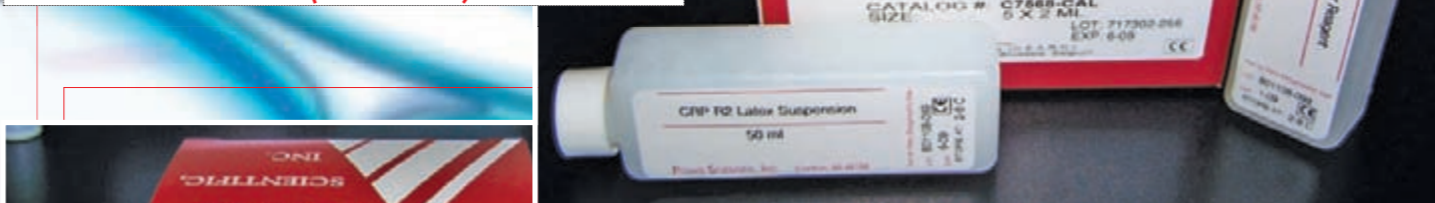
CRP kalibracioni set I:

2.5-10-20-80-160mg/dL

CRP kalibracioni set II:

5-20-40-160-320mg/dL

CRP kontrolni set (nivo I i II)



HEMOGLOBIN A1c

temperatura čuvanja: 2-8°C

linearnost: 2.0 – 16.0%

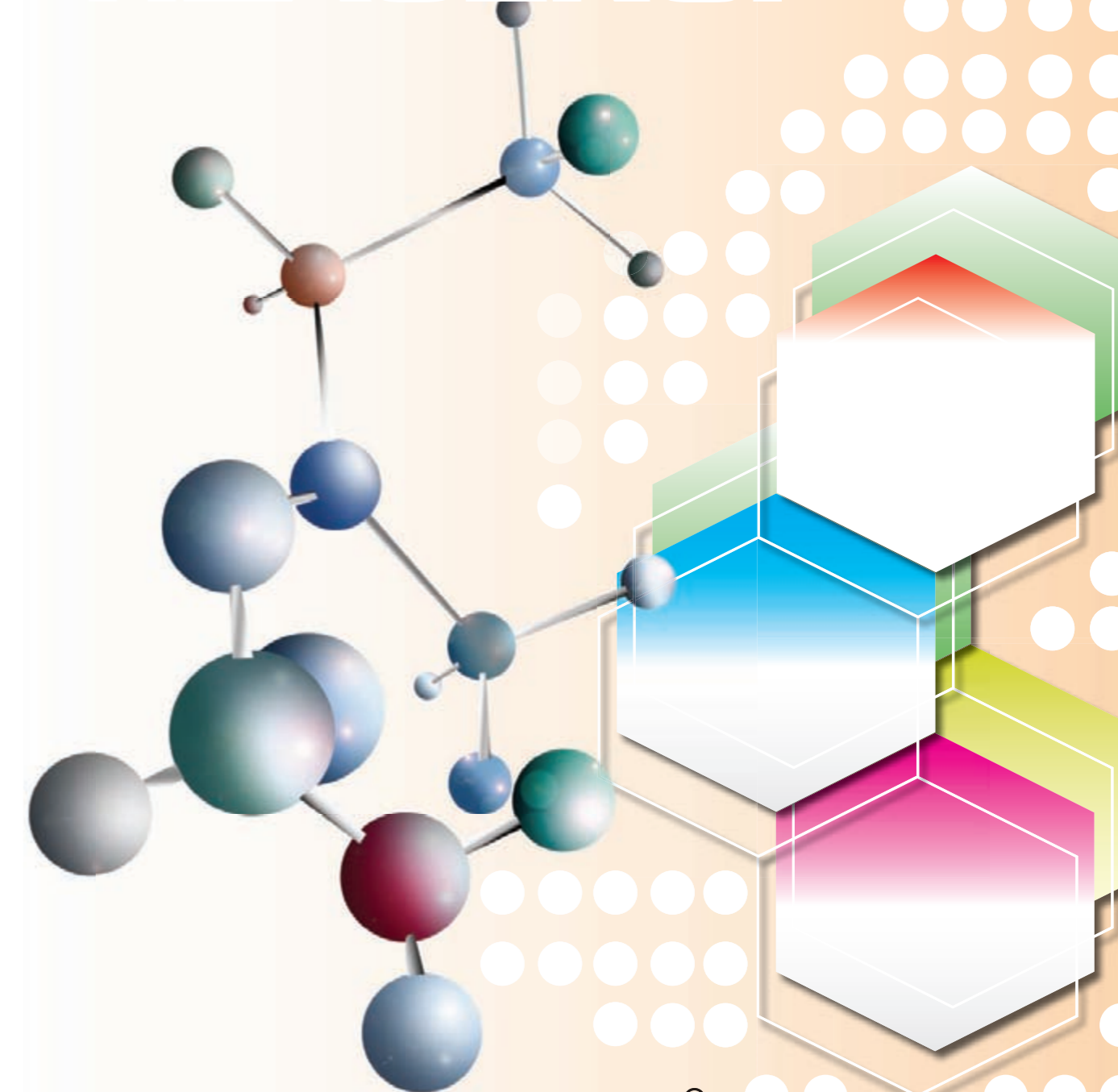
Set reagenasa za: 125 (40mL) ili 500 određivanja (120mL)

(R1-latex reagens, R2a-pufer, R2b-antitelo, lizirajući reagens)

HbA1c kalibracioni set 4x0.5mL

HbA1c kontrolni set 4x0.5mL

BIOHEMIJSKI REAGENSI



SUPERLAB[®]
INSPIRISAN KVALITETOM

M. Milankovića 25, 11070 Novi Beograd
Tel./Fax 011 22 22 222E-mail: superlab@EUnet.yu www.super-lab.com

SUPSTRATI

Reagens	pakovanje	metoda određivanja	talasna dužina	linearnost
ALBUMIN	1x120mL 1x500mL 1x1000mL	bromkrezol zeleno	630nm	5-80g/L
UKUPNI PROTEINI	1x120mL 1x500mL 1x1000mL	Biuret	546nm	10-150g/L
MIKROPROTEINI	2x120mL	Piragalol crveno	600nm	28-140mg (24h)
DIREKTNI BILIRUBIN	(120+15)mL (500+15)mL	diazo	550nm	0-340mmol/L
UKUPNI BILIRUBIN	(120+15)mL (500+15)mL	diazo sa DMSO	550nm	0-340mmol/L
GLUKOZA	1x120mL 1x500mL 1x1000mL	GOD-PAP	505nm	0-28mmol/L
GLUKOZA	1x120mL 1x500mL 1x1000mL	heksokinaza	340nm	0-28mmol/L
HOLESTEROL	1x120mL 1x500mL 1x1000mL	CHOD-POD	505nm	0-18,2mmol/L
TRIGLICERIDI	1x120mL 1x500mL 1x1000mL	GPO/Trinder	505nm	0-11,3mmol/L
HDL HOLESTEROL	2x30mL	precipitacija sa PEG	520nm	
HDL HOLESTEROL	(30+10)mL (60+20)mL	direktno određivanje	600/700nm	0-3,88mmol/L
LDL HOLESTEROL	(30+10)mL (60+20)mL	direktno određivanje	546/660nm	0-18,2mmol/L
UREA	120 testova (120+30)mL	Berthelot	630nm	0-25mmol/L
UREA	(3x120+90)mL (500+125)mL (120+30)mL	sa ureazom, UV	340nm	0-53,5mmol/L
KREATININ	(500+125)mL (1000+250)mL	modifikovana Jaffe	510nm	0-2210 μ mol/L
MOKRAĆNA KISELINA	1x120mL 1x500mL 1x1000mL	urikaza/Trinder	520nm	0-1190 μ mol/L

* standardi se ne nalaze u pakovanju sa reagensom

ENZIMI

Reagens	pakovanje	metoda određivanja	talasna dužina	linearnost
ALP	(120+30)mL (3x120+90)mL (500+125)mL	p-NPP, AMP pufer	405nm	0-1000 U/L
ALT	(120+30)mL (3x120+90)mL (500+125)mL	modifikovana IFCC bez piridoksalfosfata	340nm	0-500 U/L
AST	(120+30)mL (3x120+90)mL (500+125)mL	modifikovana IFCC bez piridoksalfosfata	340nm	0-500 U/L
AMILAZA	4x30mL 4x120mL	CNPG3	405nm	0-2000 U/L
CK	(120+30)mL (3x120+90)mL (500+125)mL	CK-NAC	340nm	0-1500 U/L
γ-GT	(120+30)mL (3x120+90)mL (500+125)mL	Modifikovana Szasz	405nm	0-800 U/L
LDH	(120+30)mL (3x120+90)mL (500+125)mL	Modifikovana Wacker/Tris	340nm	0-1000 U/L
LIPAZA	4x10mL	kolorimetrijski	550nm	0-600 U/L

NEORGANSKI JONI

Reagens	pakovanje	metoda određivanja	talasna dužina	linearnost
KALCIJUM	2x(30+30)mL 2x(120+120)mL	ocp	570nm	0-5,0 mmol/L
KALCIJUM	1x120mL 1x500mL	arsenazo	650nm	0-3,75mmol/L
NEORGANSKI FOSFAT	1x120mL 1x500mL	UV sa fosfomolibdatom	340nm	0-3,85mmol/L
MAGNEZIJUM	(120+15)mL (500+4x15)mL	kalmažit	530nm	0-2,0mmol/L
GVOŽĐE	(120+15)mL (500+15)mL	ferozin	560nm	0-89,5 μ mol/L
UIBC	40 testova 120 testova	ferozin	560nm	0-89,5 μ mol/L

* standardi se ne nalaze u pakovanju sa reagensom

STANDARDI

(standardi su u pakovanju 1x15mL)

GLUKOZA	5,6mmol/L
HOLESTEROL	5,18mmol/L
TRIGLICERIDI	2,26mmol/L
UREA	7,14 mmol/L
KREATININ	221 μ mol/L
MOKRAĆNA KISELINA	297,4 μ mol/L
ALBUMIN	40g/L
UKUPNI PROTEINI	80g/L
KALCIJUM	2,5mmol/L
FOSFOR	1,60mmol/L
MAGNEZIJUM	0,99mmol/L
* GVOŽĐE	89,5 μ mol/L

* pakovanje 1x30mL

KALIBRATORI

MULTIKALIBRATOR*	10x5mL
BILIRUBIN KALIBRATOR* (ukupni+direktni)	1x3mL ili 5x3mL
auto HDL/LDL holesterol kalibrator	1x3mL

* na bazi humanog seruma